

Inside This Issue

- > LOCAL MARKET TRENDS.....1
- > MORTGAGE RATE OUTLOOK.....2
- > HOME STATISTICS.....2
- > FORECLOSURE STATS.....3
- > CONDO STATISTICS.....3
- > CHARTS: SP/LP & SALES YTD.....4



Carolyn Bowhay

President & Broker of Record | CRS | GRI
 (619) 944-5478
 Carolyn@BowhayProperties.com
 http://www.BowhayProperties.com
 http://Facebook.com/BowhayProperties
 CA DRE License #01264830

The Real Estate Report

local market trends

CENTRAL SAN DIEGO COUNTY

San Diego Market Bottoms Out

Low inventory and high demand are pushing the real estate market in San Diego County off the bottom, slowly.

Multiple offers on the best properties in the entry-level market are being fueled by investors. Interestingly, the investors are not flipping these properties, rather, they are renting them out.

Low inventory is here to stay for the next year or two. We don't see that changing much in the near future for several reasons.

First, there is no new home building going on, which is necessary to relieve the pressure.

Second, many existing homeowners aren't going anywhere. If they have good jobs here, where would they go? Plus, too many are still underwater and can't sell.

Lastly, forget about phantom inventory. As of March, the banks owned about 5,000 properties in the county. That number includes homes AND condos. In April, there were about 3,100 properties sold. Even if the banks put all their inventory on the market at once, it's only one seven weeks worth!

So, there it is. The market has reached bottom, but there probably won't be a major move to the upside until employment starts rising.

MARKET STATISTICS

Sales of single-family, re-sale homes were up 7.9% year-over-year in April. This is the tenth month in a row home sales have been higher than the year before.

The median price for homes was flat year-over-year, which is a nice change from the previous fourteen months of prices being lower year-over-year. Much of this weakness in price is coming from the move-up and high-end markets. In the entry-level market, prices are firming.

The move-up market is moribund and we expect it to stay that way until prices start rising and homeowners get back above water.

Pending home sales, another good indicator of market movement, were up 41.4% year-over-year. That's seventeen months in a row pending sales have been higher than the year before.

The market right now is all about momentum.

Trends at a Glance			
(Single-family Homes)			
	Apr 12	Mar 12	Apr 11
Median Price:	\$ 360,000	\$ 359,900	\$ 360,000
Average Price:	\$ 467,242	\$ 468,170	\$ 473,960
Home Sales:	2,156	1,973	1,998
Pending Sales:	4,227	4,118	2,989
Inventory:	7,751	7,833	11,775
(Condos/Town Homes)			
Median Price:	\$ 210,000	\$ 190,000	\$ 206,000
Average Price:	\$ 277,216	\$ 280,186	\$ 269,000
Condo Sales:	938	888	1,024
Pending Sales:	1,774	1,714	1,402
Inventory:	3,281	3,287	5,481

SALES MOMENTUM...

for homes jumped 0.5 of a point to +3. Sales momentum, which is a leading indicator, has been rising since July 2011. The effect on prices is now starting to be felt, albeit weakly

PRICING MOMENTUM...

Which had been on the down-swing the past sixteen months, moved upward in April, gaining 0.2 of a point to 5.4.

WE CALCULATE...

momentum by using a 12-month moving average to eliminate seasonality. By comparing this year's 12-month moving average to last year's, we get a percentage showing market momentum.

CONDO STATISTICS...

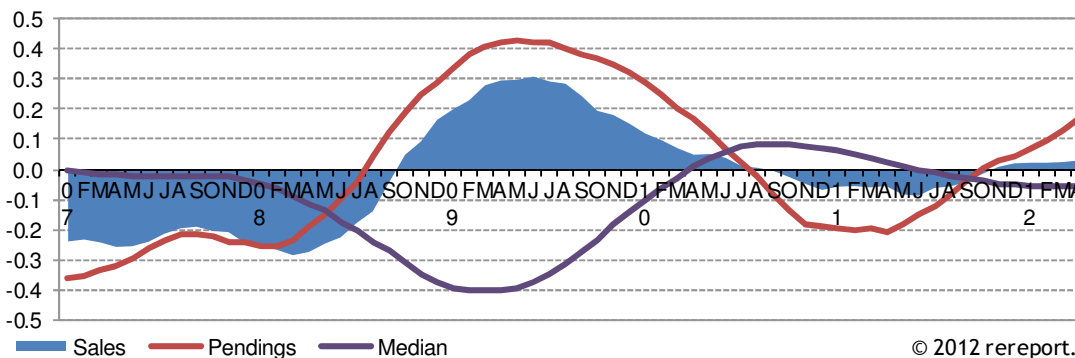
Condo sales were down 1.9% year-over-year.

The median price for condos dropped 0.1% year-over-year.

Pending condo sales were up 26.4% year-over-year.

This is an extraordinarily tough market for buyers. It's important to be calm and realistic. If you don't know what to do or where to begin, give me a call and let's discuss your situation and your options.

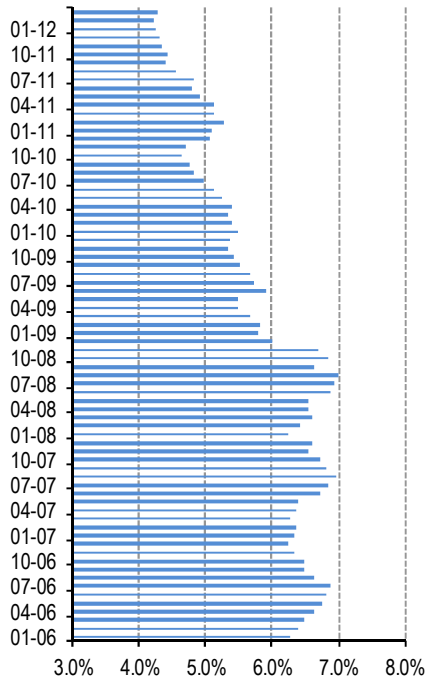
San Diego County Homes: Sales Momentum



© 2012 rereport.com

Mortgage Rate Outlook

30-Year Fixed Mortgage Rates



The chart above shows the National monthly average for 30-year fixed rate mortgages as compiled by HSH.com. The average includes mortgages of all sizes, including conforming, "expanded conforming," and jumbo.

May 4, 2012 -- Mortgage rates eased downward this week to again land at new record lows. After a hopeful late winter and early spring, the economic data began to point to a lower trajectory for growth, and that's where we find ourselves at the moment. Troubles in overseas economies continues to show, while inflation has leveled for the moment. These ingredients are the recipe for lower interest rates in general, as investors look for places to park cash away from uncertain stock markets. Once you mix in a Federal Reserve still accumulating long-term Treasuries and mortgages, you've got everything you need for rock-bottom mortgage rates.

It would be better if more borrowers could take advantage of them, though.

HSH.com's broad-market mortgage tracker -- our weekly Fixed-Rate Mortgage Indicator (FRMI) -- found that the overall average rate for 30-year fixed-rate mortgages eased by two basis points (0.02%) for the week, and at 4.15%, now stands at a new record low, the third record-setting week of 2012. The FRMI's 15-year companion also shed two basis points (.02%), slipping to a new record low of 3.39%. Important to homebuyers and low-equity-stake refinancers, already-low FHA-backed 30-year mortgages dropped by another single basis point to 3.79%, a fresh low-water mark, while the overall average for 5/1 Hybrid ARMs was unchanged, holding at an average 2.97% for the survey period, its lowest level ever.

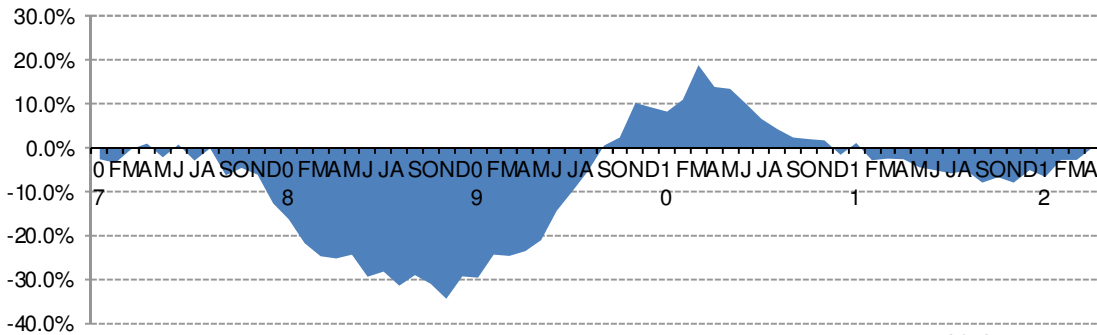
In a special question, the Fed asked lenders to compare their willingness to make a mortgage to borrowers in 2006 and 2012 using similar FICO and LTV standards. It what has been painfully obvious to even a casual observer of the mortgage market, lenders are much less willing to lend now compared to then. The reasons are widespread, but include trouble getting mortgage insurance for borrowers, the GSEs requiring buybacks on failed loans, unclear regulations, weak home prices and more. To a degree, all of these issues rely on the other to be solved, and given the thorny issues involved, it may be some time before that happens.

That's a shame, since making it somewhat easier to get a mortgage loan would tend to foster demand, firming home prices. If prices start to rise, losses on failed loans would slow, which might allow some leeway on buybacks. Fewer failing loans would see mortgage insurers in better fiscal straits, allowing them to ease rigid rules. If the market starts to function better all around, regulators might be less tempted to make drastic changes, and new regulations might come sooner rather than later, easing the anxiety of over-regulation which has hung over the market for several years now.

It goes without saying that a functioning housing market would revive the economy in a number of ways. Presently, it's not the only facet of the economy which isn't firing on all cylinders, but it is a sizable one.

Central San Diego County - April 2012													
SINGLE-FAMILY HOMES									% Change from Year Before				
Prices									Prices				
Cities	Median	Average	Sales	Pend	Inven	DOI	SP/LP		Med	Ave	Sales	Pend	Inven
County	\$ 360,000	\$ 467,242	2,156	4,227	7,751	104	97.4%		0.0%	-1.4%	7.9%	41.4%	-34.2%
Central San Diego	\$ 372,500	\$ 519,045	485	926	1,540	92	97.8%		0.7%	-1.1%	2.3%	34.4%	-40.4%
City Heights	\$ 227,000	\$ 225,113	19	44	64	98	99.0%		12.1%	7.9%	-20.8%	46.7%	-36.6%
Clairemont	\$ 385,000	\$ 413,052	29	60	80	80	98.3%		-8.8%	-12.1%	3.6%	22.4%	-43.7%
College Grove	\$ 325,000	\$ 336,959	39	49	80	59	97.0%		-5.8%	-6.2%	56.0%	-7.5%	-57.7%
Coronado	\$ 1,249,500	\$ 1,509,880	8	30	93	337	92.9%		-5.7%	-26.7%	-42.9%	42.9%	-29.0%
Del Cerro	\$ 395,000	\$ 424,094	22	54	51	67	97.9%		-3.7%	-6.4%	100.0%	92.9%	-49.5%
Encanto	\$ 240,000	\$ 228,913	50	99	185	107	99.5%		9.1%	3.3%	-35.9%	22.2%	-35.3%
Golden Hill	\$ 266,250	\$ 297,350	20	42	117	170	96.8%		-27.5%	-14.9%	-4.8%	61.5%	4.5%
La Jolla	\$ 1,650,000	\$ 1,854,160	29	57	187	187	93.4%		17.9%	25.0%	7.4%	111.1%	-34.8%
Linda Vista	\$ 364,444	\$ 338,948	19	38	55	84	96.8%		1.6%	-8.4%	-13.6%	65.2%	-16.7%
Logan Heights	\$ 184,100	\$ 174,308	12	35	34	82	99.4%		6.7%	4.6%	-14.3%	34.6%	-41.4%
Mira Mesa	\$ 335,000	\$ 331,654	49	68	86	51	98.2%		-10.7%	-14.6%	81.5%	15.3%	-53.3%
Mission Hills	\$ 1,081,580	\$ 966,294	11	30	60	158	97.2%		57.9%	6.3%	0.0%	25.0%	-41.7%
Mission Valley	\$ 403,750	\$ 399,564	20	27	19	28	98.9%		7.7%	6.6%	53.8%	125.0%	-65.5%
Normal Heights	\$ 457,500	\$ 486,540	16	28	38	69	98.7%		8.4%	11.4%	-15.8%	0.0%	-47.9%
North Park	\$ 470,000	\$ 450,539	18	41	31	50	101.0%		2.2%	1.4%	-5.3%	32.3%	-62.2%
Ocean Beach	\$ 627,500	\$ 730,156	16	28	44	80	97.2%		-18.5%	-11.6%	60.0%	40.0%	-42.1%
Old Town	\$ 567,500	\$ 577,357	14	18	18	37	96.3%		8.1%	5.1%	-6.7%	38.5%	-51.4%
Pacific Beach	\$ 693,500	\$ 666,500	10	31	68	197	96.1%		-2.3%	-21.7%	11.1%	93.8%	-30.6%
Paradise Hills	\$ 257,000	\$ 264,932	22	34	46	61	96.9%		-1.2%	0.5%	4.8%	6.3%	-49.5%
Point Loma	\$ 672,500	\$ 888,231	21	31	62	86	97.5%		-7.2%	-9.9%	10.5%	29.2%	-31.9%
San Carlos	\$ 372,000	\$ 389,534	17	31	49	84	99.4%		-8.1%	-4.7%	-10.5%	34.8%	-37.2%
Scripps Miramar	\$ 640,000	\$ 632,813	28	66	60	62	97.6%		-17.9%	-15.4%	12.0%	46.7%	-48.3%
Sorrento Valley	\$ -	\$ -	0	0	0	0	0.0%		n/a	n/a	n/a	n/a	n/a
Tierrasanta	\$ 470,000	\$ 476,733	15	22	39	75	98.2%		-4.1%	-2.3%	36.4%	22.2%	-32.8%
University City	\$ 645,000	\$ 642,789	9	21	24	77	100.7%		2.6%	5.9%	0.0%	40.0%	-52.9%

San Diego County Homes: Year-Over-Year Median Price Change



© 2012 rereport.com

FORECLOSURE STATISTICS

Notices of default, the first step in the foreclosure process, in San Diego County dropped 16.8% in March from the year before, but were up 18.1% from February.

Notices of sale, which set the date and time of an auction, and serve as the homeowner's final notice before sale, dropped 15.3% from February, and were down 20.9% year-over-year.

After the filing of a Notice of Trustee Sale, there are only three possible outcomes. First, the sale can be cancelled for reasons that include a successful loan modification or short sale, a filing error, or a legal requirement to re-file the notice after extended postponements.

Alternatively, if the property is taken to sale, the bank will place the opening bid. If a third party, typically an investor, bids more than the bank's opening bid, the property will be sold to the third party; if not, it will go back to the bank and become part of that bank's REO inventory.

In February, cancellations were up 23% from February, but were off 26.3% year-over-year.

Properties going back to the bank dropped 17.2% from February, and were down 64.1% compared to March 2011.

The total number of properties that have had a notice of default filed declined by 10.1% in March compared to March 2011.

The total number of properties scheduled for sale declined by 23.9%, year-over-year. Both of these are very positive signs.

The total number of properties owned by banks dropped by 25.3% year-over-year. That still leaves about 5,000 bank-owned properties in the county, which is approximately seven weeks of supply.

Foreclosure statistics provided by:
<http://foreclosureradar.com>.

Central San Diego County - April 2012													
CONDOS								% Change from Year Before					
Prices								Prices					
Cities	Median	Average	Sales	Pend	Inven	DOI	SP/LP	Med	Ave	Sales	Pend	Inven	
County	\$ 210,000	\$ 277,216	938	1,774	3,281	101	97.9%	-0.1%	5.0%	-1.9%	26.4%	-40.0%	
Central San Diego	\$ 232,500	\$ 323,549	401	701	1,418	103	97.7%	-0.2%	4.7%	-1.5%	19.4%	-43.3%	
City Heights	\$ 105,100	\$ 123,045	11	13	28	74	96.8%	-4.5%	8.2%	22.2%	-7.1%	-55.6%	
Clairemont	\$ 145,000	\$ 170,833	3	21	39	377	97.0%	-42.9%	-33.2%	-25.0%	50.0%	-29.1%	
College Grove	\$ 136,000	\$ 131,030	23	21	41	52	99.5%	23.6%	15.6%	109.1%	31.3%	-45.3%	
Coronado	\$ 755,000	\$ 1,074,870	9	22	72	232	93.3%	-1.0%	30.7%	50.0%	144.4%	-44.2%	
Del Cerro	\$ 160,000	\$ 183,227	11	14	34	90	99.7%	-8.6%	-5.7%	-47.6%	-22.2%	-30.6%	
Downtown	\$ 385,000	\$ 455,984	77	108	264	99	97.5%	-3.2%	-8.7%	-15.4%	-12.9%	-45.5%	
Golden Hill	\$ 173,000	\$ 173,000	1	13	39	1,131	93.6%	-4.9%	11.9%	-85.7%	62.5%	5.4%	
La Jolla	\$ 405,000	\$ 648,000	26	65	163	182	95.8%	-11.5%	5.9%	18.2%	97.0%	-32.9%	
Linda Vista	\$ 250,500	\$ 290,986	14	36	46	95	96.8%	0.2%	7.9%	-22.2%	125.0%	-38.7%	
Mira Mesa	\$ 191,000	\$ 194,978	23	35	56	71	97.4%	6.7%	4.0%	-8.0%	12.9%	-34.9%	
Mission Hills	\$ 360,000	\$ 424,819	21	38	73	101	96.4%	16.9%	29.9%	5.0%	15.2%	-46.3%	
Mission Valley	\$ 173,000	\$ 220,703	33	67	109	96	98.0%	-21.4%	-5.9%	-17.5%	31.4%	-48.3%	
Normal Heights	\$ 130,000	\$ 163,845	11	25	23	61	98.5%	-23.5%	4.9%	22.2%	4.2%	-65.2%	
North Park	\$ 169,000	\$ 170,094	26	24	41	46	99.0%	4.0%	-7.4%	30.0%	-7.7%	-55.4%	
Ocean Beach	\$ 353,944	\$ 320,548	8	17	25	91	97.9%	-11.5%	-9.3%	14.3%	112.5%	-53.7%	
Old Town	\$ 235,500	\$ 248,778	18	21	40	64	97.1%	30.8%	17.9%	38.5%	5.0%	-58.3%	
Pacific Beach	\$ 318,000	\$ 385,322	23	43	113	142	97.3%	-16.2%	-17.7%	-11.5%	10.3%	-37.9%	
Paradise Hills	\$ 146,250	\$ 151,100	14	28	47	97	100.2%	-25.0%	-10.8%	7.7%	33.3%	-34.7%	
Point Loma	\$ 495,000	\$ 452,500	3	7	22	213	98.1%	n/a	n/a	n/a	n/a	n/a	
San Carlos	\$ 160,000	\$ 173,786	7	13	19	79	101.1%	11.1%	-0.2%	-12.5%	18.2%	-48.6%	
Scripps Miramar	\$ 312,000	\$ 328,533	17	29	47	80	97.7%	4.0%	14.5%	-26.1%	52.6%	-39.0%	
Sorrento Valley	\$ 370,000	\$ 370,000	1	2	8	232	94.3%	4.2%	0.2%	-88.9%	100.0%	-38.5%	
Tierrasanta	\$ 254,950	\$ 252,400	6	15	26	126	99.6%	-14.0%	-12.2%	-40.0%	7.1%	-29.7%	
University City	\$ 235,000	\$ 244,170	25	46	71	82	97.6%	-0.7%	-13.1%	4.2%	35.3%	-51.4%	

Table Definitions

Median Price

The price at which 50% of prices were higher and 50% were lower.

Average Price

Add all prices and divide by the number of sales.

SP/LP

Sales price to list price ratio or the price paid for the property divided by the asking price.

DOI

Days of Inventory, or how many days it would take to sell all the property for sale at the current rate of sales.

Pend

Property under contract to sell that hasn't closed escrow.

Inven

Number of properties actively for sale as of the last day of the month.

The Real Estate Report

Central San Diego County

Carolyn Bowhay

President & Broker of Record | CRS | GRI

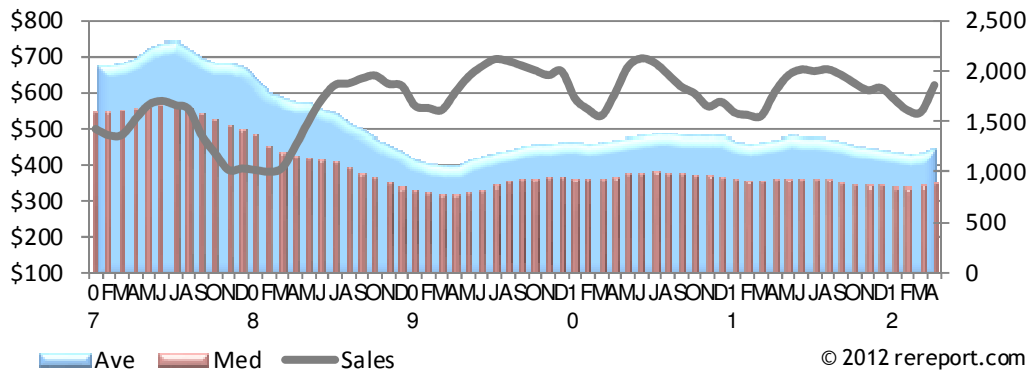


For a **FREE** subscription and the city by city breakdown, go to our web-site at:

<http://www.BowhayProperties.com>

San Diego County — Homes: Sold Prices & Unit Sales

(3-month moving average — price in \$000's)



San Diego County — Condos: Sold Prices & Unit Sales

(3-month moving average — price in \$000's)

